



**COMPATIBLE EVEN  
WITH SUBMERSIBLES!**

## THE CONTROLLER FOR YOUR COLLECTION SYSTEM

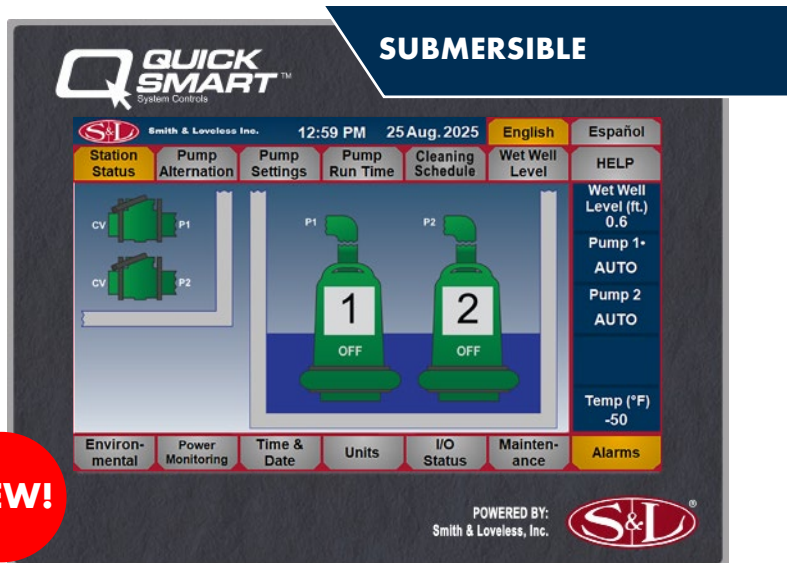
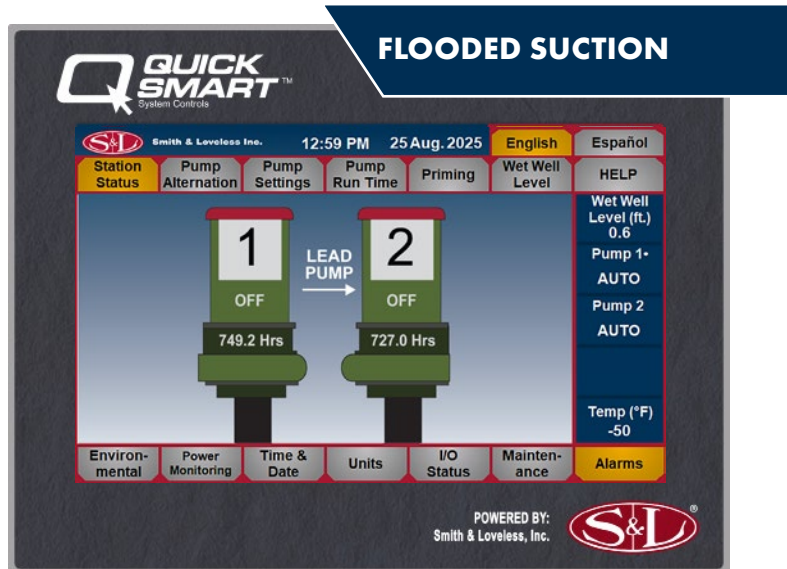
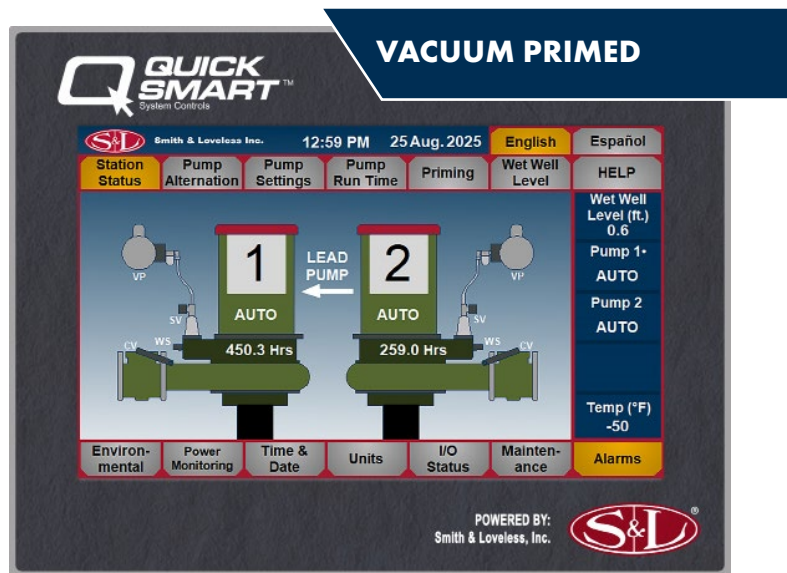
No matter your pump type, **QUICKSMART™** is the right solution for your operations team.

Add **QUICKSMART™** to all of the pump stations in your collection system and use the same **QUICKSMART™** menu interface no matter which pump station you are working on.

For fast navigation through the PLC controller, the **QUICKSMART™** menu clicks to **English** or **Español**, including these program screens:

- Station Status
- Pump alternation
- Pump settings
- Pump run time
- Priming
- Wet well level
- "Help"
- Quick View Pump Operation of on/off, flow, wet well level, and temp
- Environmental
- Power Monitoring
- Time and Date
- Units
- I/O Status
- Maintenance
- Alarms

Whether it's for vacuum primed, flooded suction or submersibles, this advanced touch-screen PLC operates the entire pump station is designed to operate with SCADA systems as well. The **QUICKSMART™** technology is here for you. Request a quote, contact us at [retrofit@smithandloveless.com](mailto:retrofit@smithandloveless.com).



**NEW!**



TO ORDER, CALL

**1-800-922-9048**