

## Project Profiles



**Application:** Ft. Collins, CO  
**S&L Equipment::** Water Booster System

### Station Structure Details

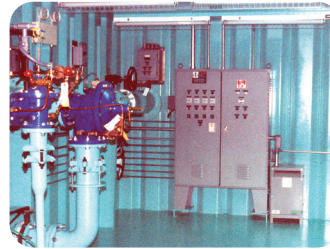
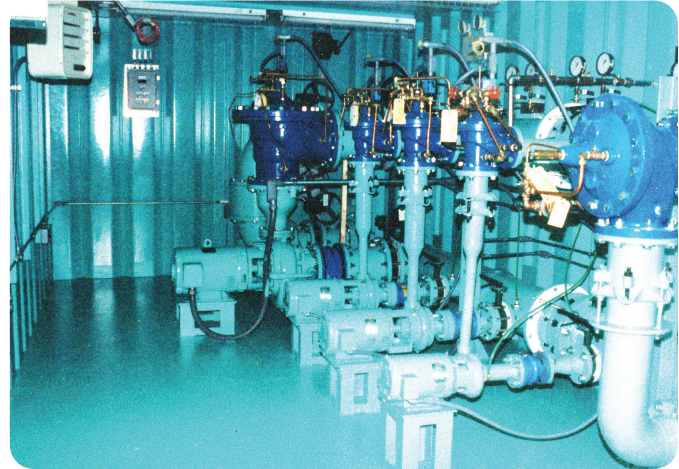
- 33' Long x 12' Wide x 8'-6" Inner Height Chamber
- Underground, V-Crimp Steel, Factory-Built & Tested
- Top Insulated: Polyurethane Foam & **VERSAPOX**®

### Pumping Specs (4 - Horiz. End Suction Pumps)

- Service Pumps (2): 125 GPM @ 135' TDH, 10 HP
- Jockey Pump: 80 GPM @ 125' TDH, 5 HP
- Fire Pump: 1,800 GPM @ 79' TDH, 50 HP

### Piping

- 12" Suction Header
- 12" Discharge Header
- 6" Control Valve



**Application:** Ft. Collins, CO  
**S&L Equipment::** Water Booster System

### Station Structure Details

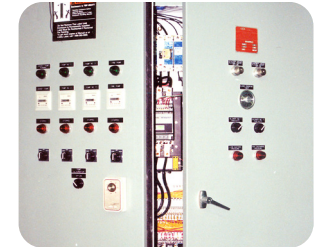
- 21' Long x 10' Wide x 8'-6" Inner Height Chamber
- Underground, V-Crimp Steel, Factory-Built & Tested

### Pumping Specs (2 - Horiz. End Suction Pumps)

- Service Pumps (2): 850 GPM @ 135' TDH, 40 HP
- 3/60/460 Volt ODP, Close-Coupled, Adjustable Base

### Piping & Metering

- 8" Suction Header
- 8" Discharge Header
- 8" Magnetic Flow Meter



## Project Profiles



**Application:** Loveland, CO  
**S&L Equipment::** Water Booster System

### Station Structure Details

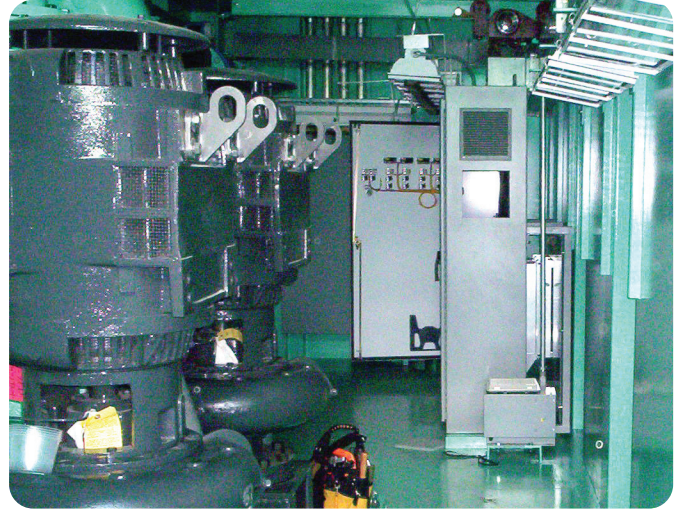
- 40' Long x 12' Wide x 10'-6" Inner Height Chamber
- Underground, V-Crimp Steel, Factory-Built & Tested

### Pumping Specs (2 Vertical Flooded Suction Pumps)

- Service Pumps (2): 1500 GPM @ 170' TDH
- 3/60/460 Volt ODP, Close-Coupled
- VFDs
- Designed for (4)150 HP Pumps (Future Conditions)

### Piping & Pump Connections

- 16" Suction Header
- 16" Discharge Header



**Application:** Hornell, NY  
**S&L Equipment::** Water Booster System

### Station Structure Details

- 12' Long x 8' Wide x 8'-6" Inner Height Chamber
- Above-Grade, Insulated Pre-Fab Building Enclosure
- Factory-Built & Tested

### Pumping Specs (2 - Horiz. End Suction Pumps)

- Service Pumps (2): 121 GPM @ 167' TDH, 10 HP
- 3/60/460 Volt ODP, Close-Coupled, Adjustable Base

### Piping & Metering

- 3" Discharge Header
- 3" Suction Header

